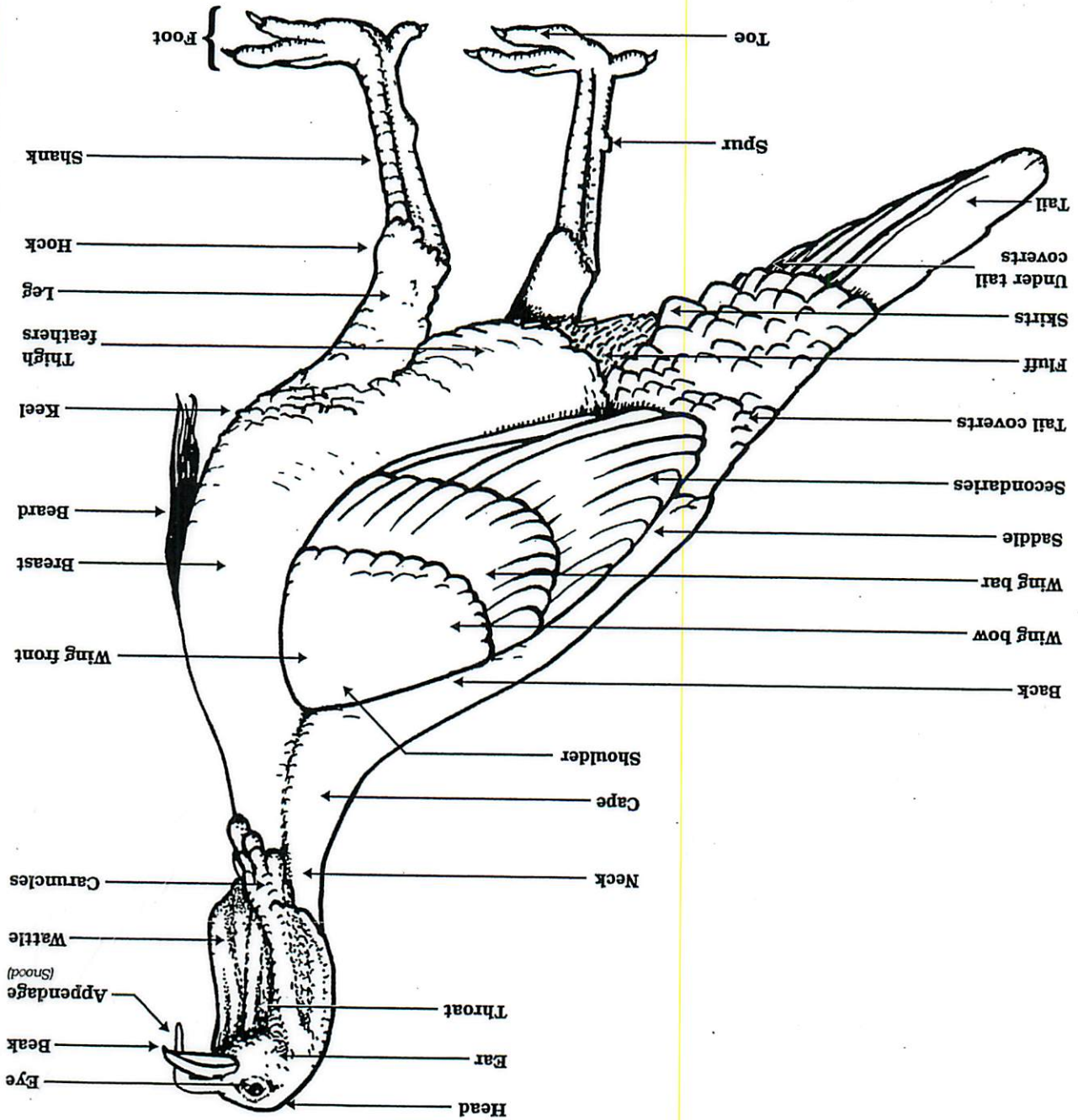


## Poultry - Turkey Market & Non Market

8 -11 Years Old			
	Points	Skill to be Done	Resource
<b>Parts of the Turkey</b>	/32	Labels 16 parts on the poster (2 pts. each)	Kit <b>*Updated poster in 2017</b>
<b>Breeds</b>	/5	Label the 5 of the 10 breeds of turkey (1 pt. each)	Kit
<b>Talking Turkey</b>			
Definition of the words used in Evaluating Turkeys	/8	Label the definition with the correct word (2 pts. each)	Kit
Medication Label	/7	Place labels on medication diagram (1 pt. each)	Kit
Sanitation	/8	Point to & identify 8 sanitation problems and tell what you would do to correct them. (1 pt. each)	Kit
<b>Project Book Work</b>	/20	Answer questions from filled out book in 4 areas of judges choice	Project Book
<b>Interview &amp; Feed Tag</b>	/20	Be able to discuss project work / animal and answer questions from your feed tag	Be sure you have your own feed tag
<b>Total Points</b>	<b>/100</b>		
<b>12- 14 Year Olds</b>			
	Points	Skill to be Done	Resource
<b>Feathers &amp; Parts of the Wing</b>	/12	Label the 6 parts of the wing feathers (2pts.)	Kit <b>*Updated poster in 2017</b>
<b>Parts of the Head &amp; Neck</b>	/9	Label the parts of the head & neck (1 pts. each)	Kit
<b>Breeds</b>	/10	Label all 10 breeds (1 pt. each)	Kit
<b>Animal Wellness</b>			
Common Diseases/Parasites	/10	Match the definition with the correct Disease/Parasite name (2 pts. each)	Kit
Identification of Conformation Defects	/12	Label the 6 conformation defects in the diagram (2 pts. each)	Kit
<b>Project Book</b>	/20	Answer questions from filled out book in 4 areas of judges choice	Project Book
<b>Interview &amp; Feed Tag</b>	/20	Be able to discuss project work / animal and answer questions from your feed tag	Be sure you have your own feed tag
<b>Total Points</b>	<b>/100</b>		

<b>15-18 Year Olds</b>	<b>Points</b>	<b>Skill to Be Done</b>	<b>Resource</b>
<b>Parts of the Turkey</b>	/26	Label 26 parts of the turkey (1 pt. each)	Kit
<b>Feathers &amp; Parts of the Wing</b>	/6	Label the parts of the turkey (1 pt. each)	Kit <b>*Updated in 2017</b>
<b>Breeds of Turkeys</b>	/3	Label 6 breeds of turkey (1/2 pt. each)	Kit <b>*Updated in 2017</b>
<b>Management</b>			
*Careers in Poultry Science	/5	Name 5 careers in the poultry science field (1 pt. each)	Kit
<b>Animal Wellness</b>			
Current issue review	/20	Read and be able to discuss the information in the article provided; form your own opinions and ideas about the topic. (22 pts. available)	henry.osu.edu under Livestock Project Member Information; may request hard copy
Project Book Work	/20	Answer questions from your project book in 4 areas of judges choice	Project Book
Interview & Feed Tag	/20	Be able to discuss project work/animal and answer questions about your feed tag	Be sure you have your own feed tag
<b>Total Points</b>	<b>/100</b>		

# Parts of a Turkey



Animal Care and Production:  
Youth Education Program

**POULTRY**  
LEARNING LABORATORY KIT

Product distribution through the Curriculum Materials Service

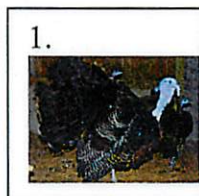
Cards, Charts, Diagrams, Posters, and Prints

Use this poster in conjunction with Anatomy: Match Part with Location situation/task statement and Parts of a Turkey identification tags.

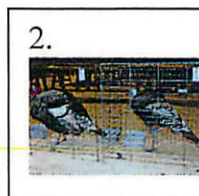
# Turkey Breeds

# ANSWER KEY

1. Eastern Strain Wild



2. Narraganset



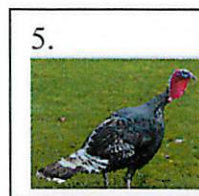
3. Slate



4. Midget White



5. Heritage



# Medication Label

Answer Key

Name of Drug \_\_\_\_\_

**OMNIBIOTIC**

(hydrocillin) \_\_\_\_\_

Active Ingredients

**Directions for use: See package insert**

Cautions  
and Warnings \_\_\_\_\_

**Warning:** The use of this drug must be discontinued for 30 days before treated animals are slaughtered for food. Exceeding the highest recommended dosage level may result in antibiotic residues in meat or milk beyond the withdrawal time.

Withholding  
Times

Store between 2° and 8° C ( 36° and 46° F ) \_\_\_\_\_

Storage

Keep dry and away from light

Quantity  
of Contents \_\_\_\_\_

Net Contents: 100 ml



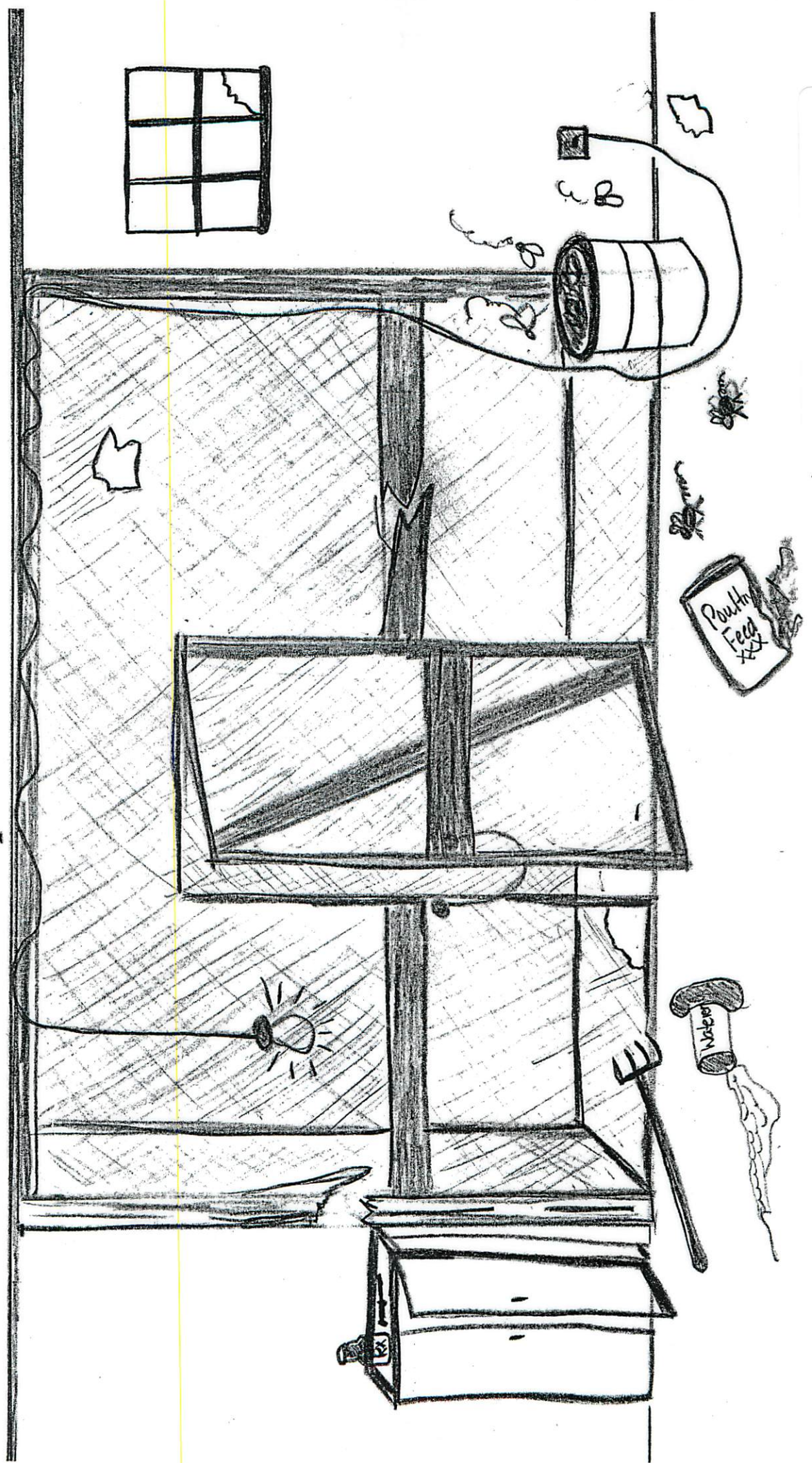
**TAKE TIME**  
**OBSERVE LABEL**  
**DIRECTIONS**

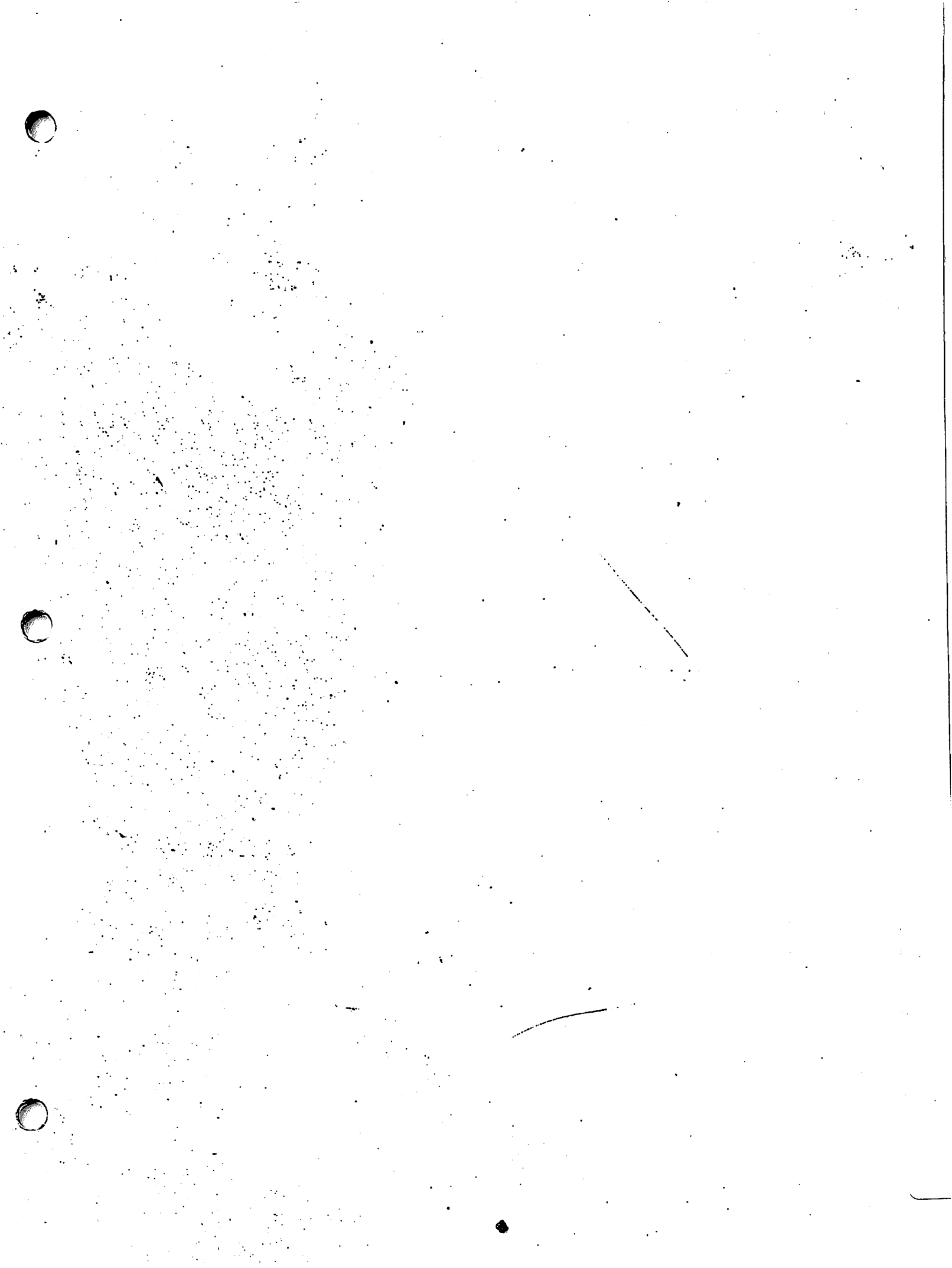
Distributed by  
**USA Animal Health, Inc.** \_\_\_\_\_

Name of Distributor

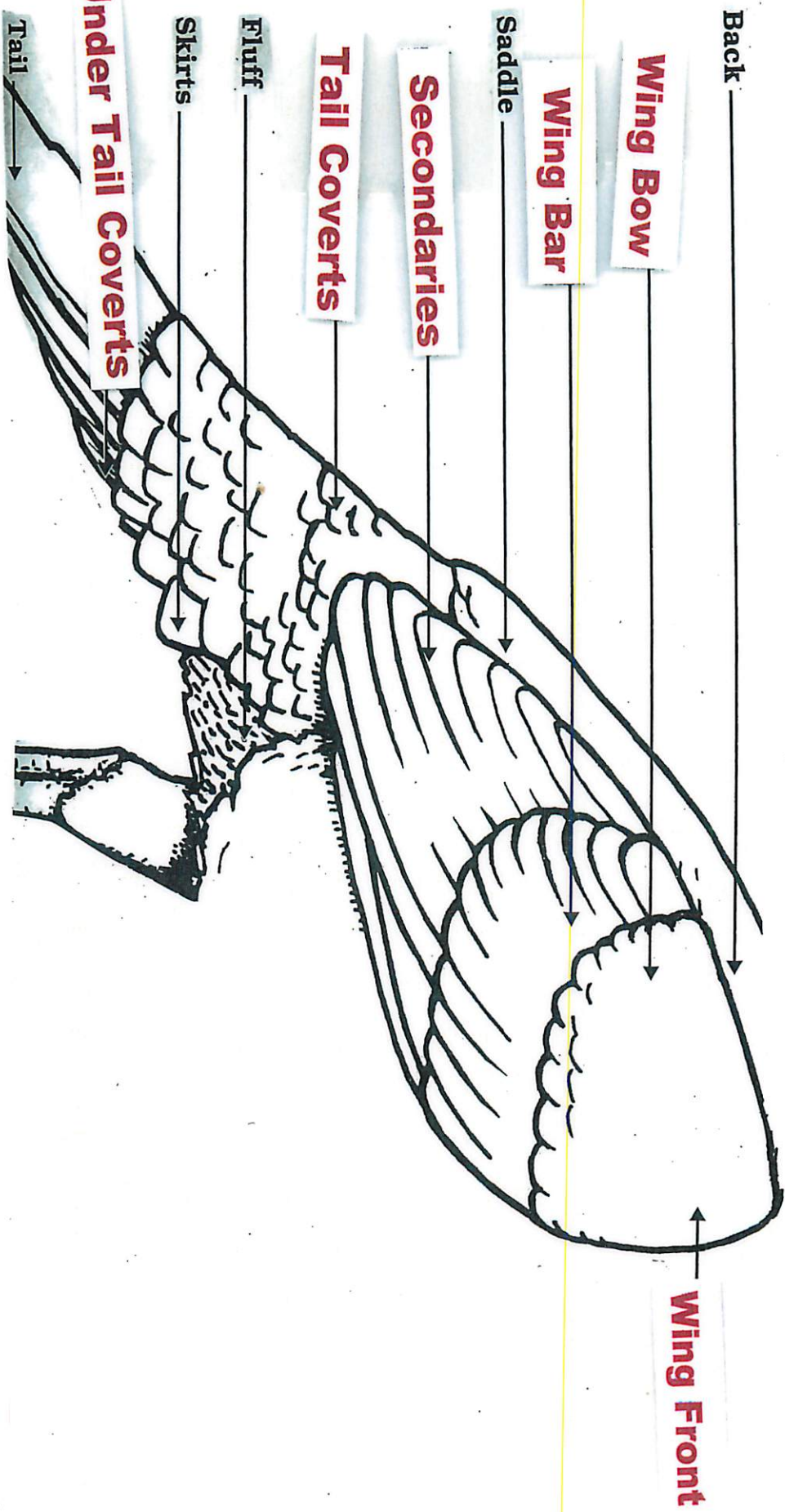
# Sanitation

8-11 Year Olds= Identify 6 sanitation problems and tell what you would do to correct them. (1 pt. each)





Feathers & Parts of the Wing  
12 Year Olds= Label the 6 parts of the wing feather. (2 pt. each)  
15-18 Year Olds= Label the 6 parts of the wing feather. (1 pt. each)



Back

Wing Bow

Wing Bar

Saddle

Secondaries

Tail Coverts

Fluff

Skirts

Under Tail Coverts

Tail

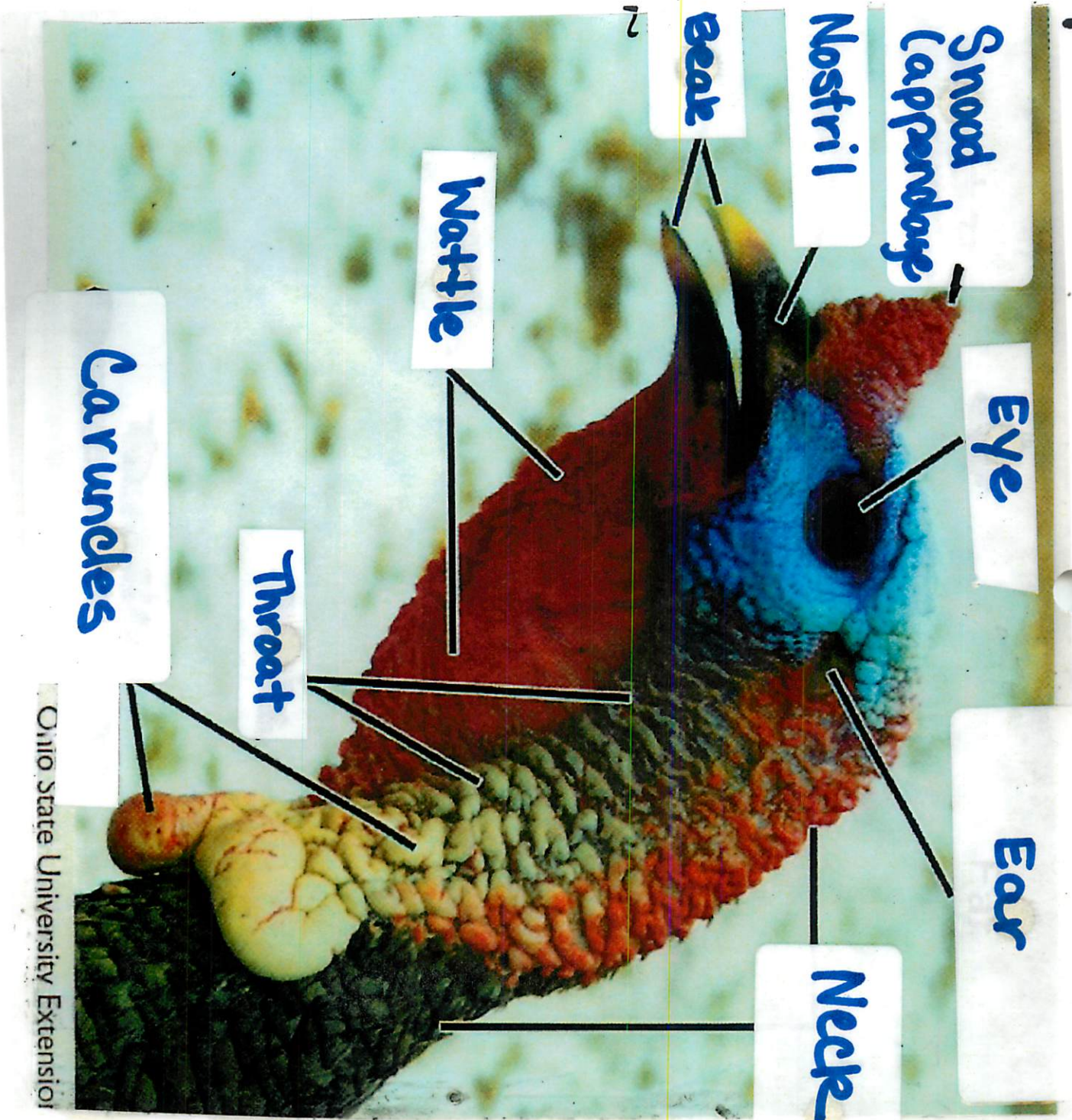
Wing Front



12-14 year olds

Head & Neck Parts

(Answer key)



Ohio State University Extension

# Common Diseases & Parasites

## ANSWER KEY

12-14 Year Olds= Match the term to each definition. (1 pt. each)

Disease/Parasite	Definition
MITES	An external parasite that can be treated with an insecticide.
FOWL POX	This disease produces wart-like spots or blisters on the head and wattles and in some cases ulceration of the mouth and windpipe.
SINUSITIS	This disease is caused by a bacteria-like organism called <i>Mycoplasma gallisepticum</i> .
BLACKHEAD	Caused by a microscopic protozoan called <i>Histomonas meleagridis</i> . It causes pathological changes in the intestinal tract and liver.
LICE	Tiny, wingless, 6-legged, flat-bodied, insects with broad, round heads.

# Identification of Conformation Defects

## ANSWER KEY

12-14 Year Olds= Name 6 conformation defects. (1 pt. each)

The presence of any of the following defects lowers the final placing of a turkey or may eliminate it from the show.

- General defects such as cuts and tears
- Broken or disjointed bones
- Skin or flesh bruises anywhere other than on the wing tip
- Blisters or calluses on the breast
- Insect bites
- External parasites (mites, lice)
- Extremely dirty birds
- Pendulous crop
  
- Conformation Defects=
  - Rocker heels
  - Breast bones that are dented, crooked, knobby, V-shaped or slab-sided
  - Backs that are narrow, crooked (hunched), roached (arched), or humped
  - Legs and wings that are deformed
  - Bodies that are definitely wedge-shaped

## Career in Poultry Science

## ANSWER KEY

15-18 Year Olds= Name 5 careers in the poultry science field. (1 pt. each)

Breeder Flock Management

Hatchery Management

Poultry Production

Feed Mill Management

Company Service Representative

Poultry and Egg Processing Plant Management

Poultry Grader (Egg & Packaging)

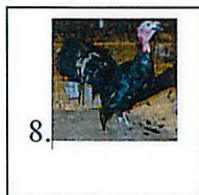
6. Bourbon Red



7. Royal Palm



8. Black



9. Broad Breasted White  
(AKA: Large White; White Holland)



10. Broad Breasted Bronze



## Talking Turkey- Definitions of Words in Evaluating Turkeys

## ANSWER KEY

8-11 Year Olds= Label the definition with the correct term. (1 pt. each)

This term refers primarily to the skeletal system or shape of the bird. It is often used mistakenly to describe the distribution of flesh on the turkey.

**ANSWER: CONFORMATION**

This term refers to the amount of and distribution of muscle or flesh on the bird.

**ANSWER: FLESHING**

This term refers to the amount of fat in and immediately under the skin.

**ANSWER: FINISH**

This term refers to an imperfection that detracts from the turkey's appearance or performance.

**ANSWER: DEFECT**