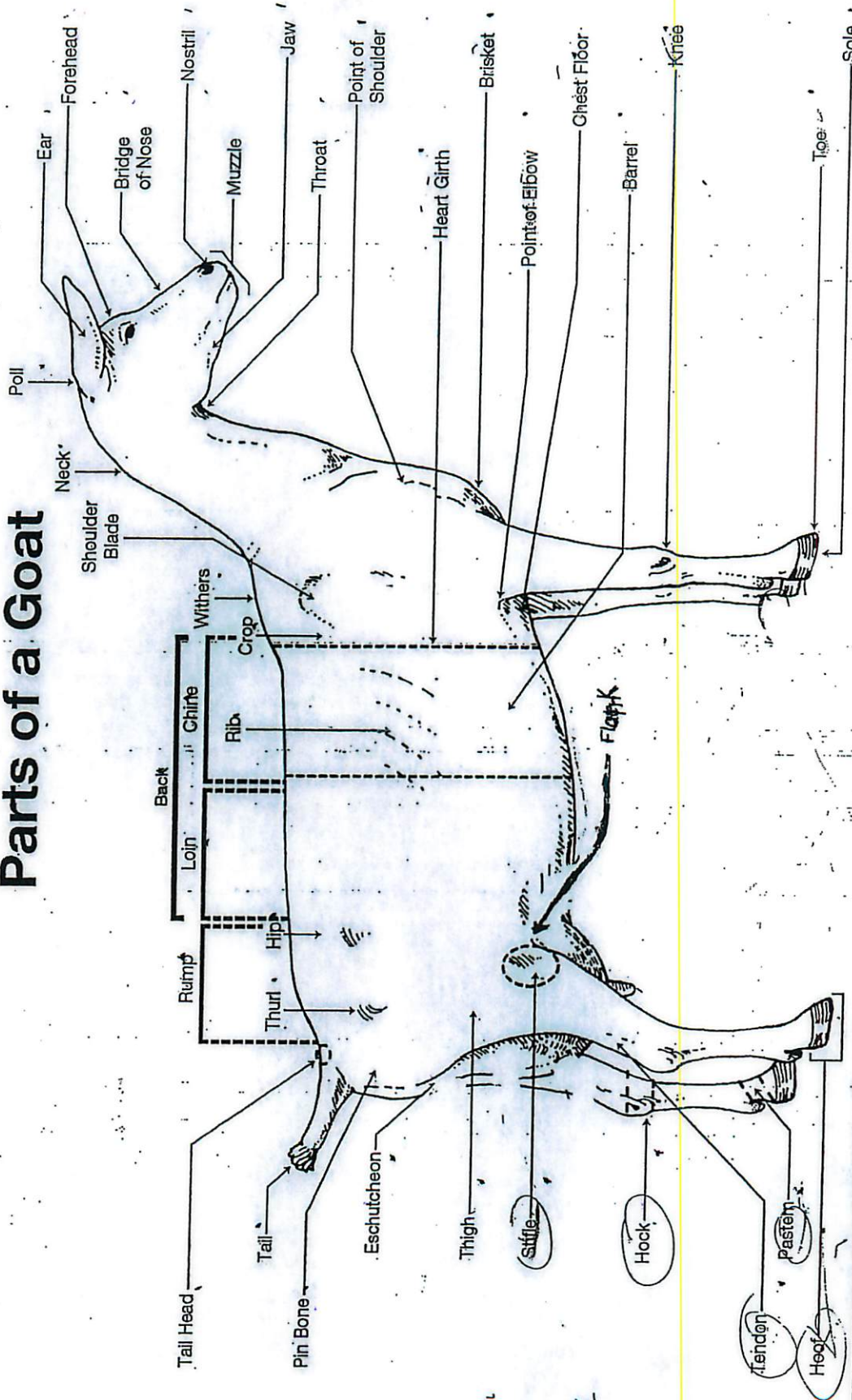


# Parts of a Goat



**Exploratory Learning: Educational Program**  
 This component adapted from materials of the American Dairy Goat Association

**GOAT**  
 LEARNING LABORATORY KIT

Product distribution through the Curriculum Materials Service



# Answer Key

## 5-11 Year Olds

Breeds~ Label the 3 meat-type goats and 5 additional goat breeds that could be used as market goats. (1 pt. each)

Alpine

LaMancha

Nubian

Oberhasli

Saanen

Toggenburg

Sable

KiKo

Nigerian Dwarf

Boer

Spanish

Kiko

Alpine



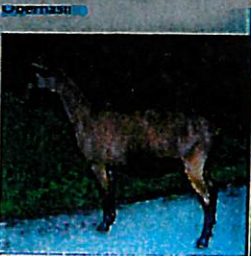
Boer



Nigerian Dwarf



Nubian



Sable



Irish Goat



Toggenburg

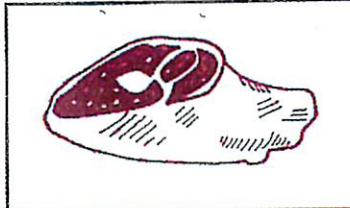


Courtesy of FarmVet Pharmacy, Service The Ohio State University

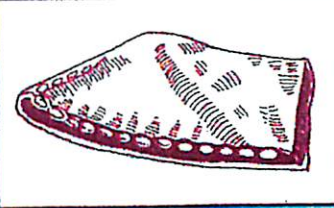
# Wholesale Cuts of Chevon



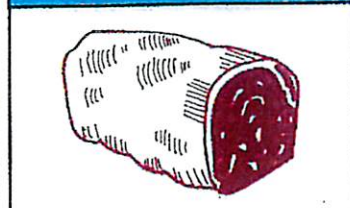
Arm Chop



Fore Shank



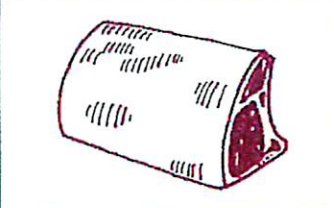
Breast



Rolled Shoulder



Blade Chop



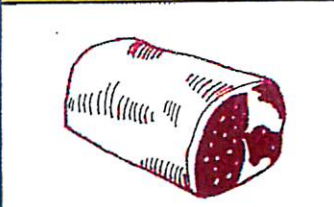
Rib Roast



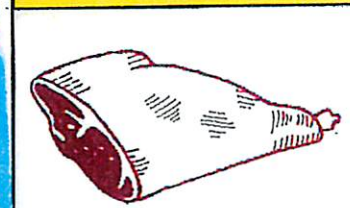
Chop



Loin Chop



Loin Roast



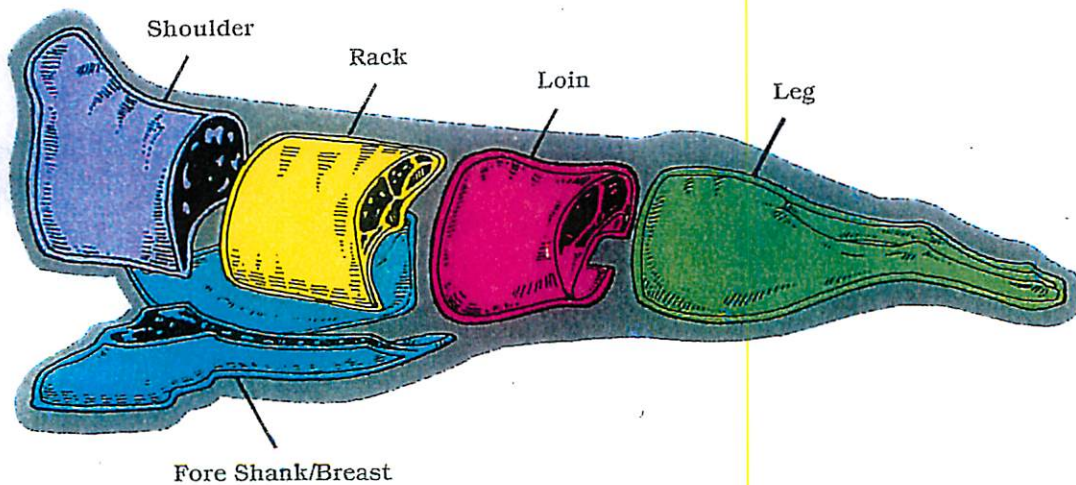
Leg, Sirloin Off



Rolled Leg



Stewed Cubed



Federal and state laws specify that drugs for lactating does and drugs for other animals, including non-lactating does, kids, replacement does, wethers, etc., must be stored separately. This can be done by labeling shelves in your medication cabinet or refrigerator "Drugs for Lactating Animals" and "Drugs for Non-Lactating Animals."

All medications must be stored so that they do not come in contact with feed, milk, or milking equipment. If you are a dairy producer, check your state guidelines to learn about specific drug storage regulations.

## Guide to Reading the Medication Label

**Name of drug.** Brand or generic name of drug being prescribed.

**Active ingredients.** Chemical name(s) of what is in the drug.

**Withholding/Withdrawal times.** The time period that must elapse after the last treatment and before harvest of the animal (slaughter) or use of its products (meat, milk, and eggs) for human consumption.

### Medication Label

<u>Name of Drug</u> <b>OMNIBIOTIC</b>	
(Hydrocillin) <u>Active Ingredient</u>	
<b>Directions for use: See package insert.</b>	
<u>Cautions and Warnings</u>	<b>Warning:</b> The use of this drug must be discontinued for 30 days before treated animals are slaughtered for food. Exceeding the highest recommended dosage level may result in antibiotic residues in meat or milk beyond the withdrawal time.
	<u>Withholding Times</u>
	<u>Storage</u>
	Store between 2° and 8°C (36° and 46°F) Keep dry and away from light.
<u>Quantity of Contents</u>	Net Contents: 100 mL Distributed by USA Animal Health, Inc.
	<u>Name of Distributor</u>
<u>Lot Number</u>	<u>Expiration Date</u>
EQ771-3	2/11/20XX

This activity was adapted from information found in the *Quality Assurance and Animal Care Youth Education Program*. Based upon work supported by the Extension Service, United States Department of Agriculture, under special project number 93-EFSQ-4096.



# Drug Notification Use Form

8-11 Year Olds= Fill in the appropriate information on the sample form after reading the scenario.

As a 4-H member you have enrolled in the Market Goat project. You are anxiously awaiting the county fair- the show case for your project animals. You have completed the annual Quality Assurance Education in March of this year for your project.

You have purchased two Boer-Cross market wethers this year to raise~ one being a back-up animal. You may only exhibit one of the animals at fair.

It is now time for you to take your market goat to the fair and have chosen the goat with tag #HCJF131 to exhibit. Complete the Drug Use Notification Form (DUNF) with the information you have from this scenario you have just read.

Market  
Spots

**Sanitation Problems:**  
**8-11 Year Olds**  
**Horses, Dairy Cows, Beef Cattle, Hogs, Goats and Sheep**

**Problems:**

Rake on floor

Window broke; glass in stall

Post broken

Wire point is showing

Extension cord running across floor

Feed on floor - mice in it

Syringe / Needle left out

Dirty Bedding with manure

Muck bucket with Manure and flies

Latch open

Feed pan left in pen

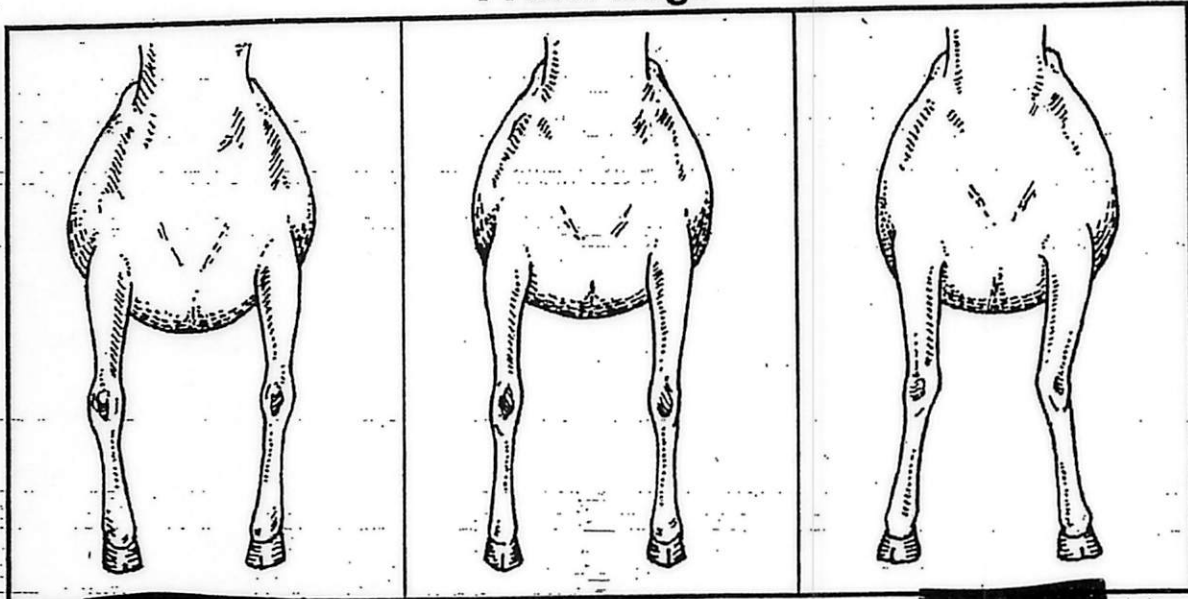
Light not covered

Storage cabinet open

Medicine left out and down low

# Goat Feet and Leg Structure (Part I)

## Front Legs

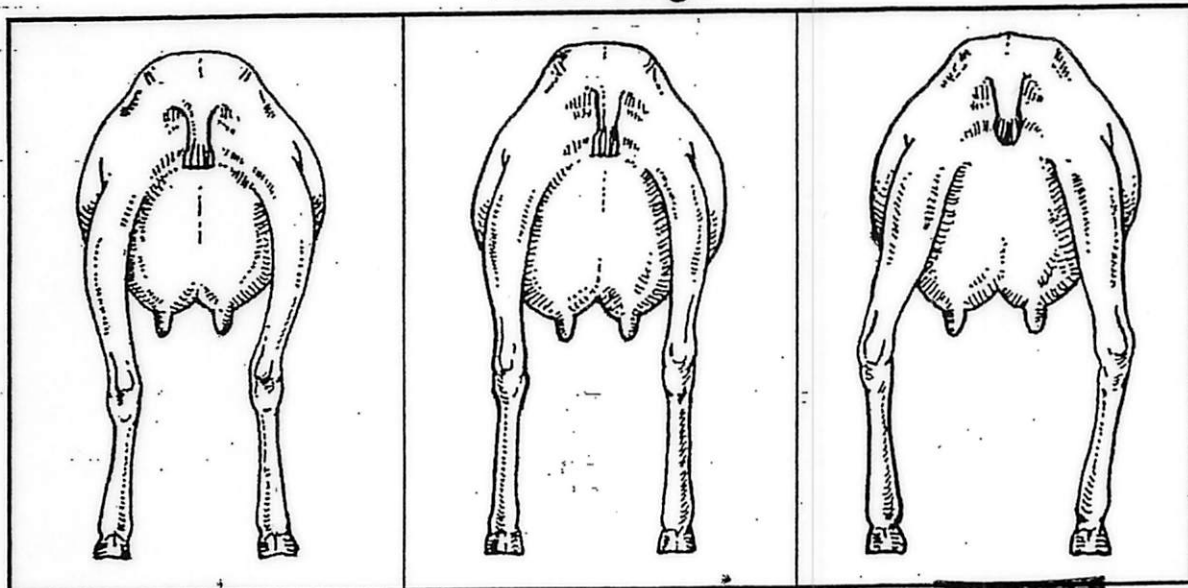


Buckled Knees

Ideal

Bowed Knees

## Rear Legs



Close at the Hocks

Ideal

Bowlegged

 **GOAT**  
LEARNING LABORATORY KIT

Exploratory Learning: Educational Program

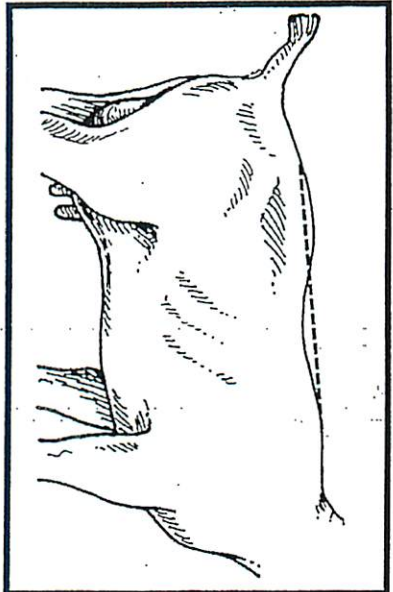
This component adapted from materials published in the *Dairy Goat Journal*, Helenville, WI

Product distribution through the Curriculum Materials Service

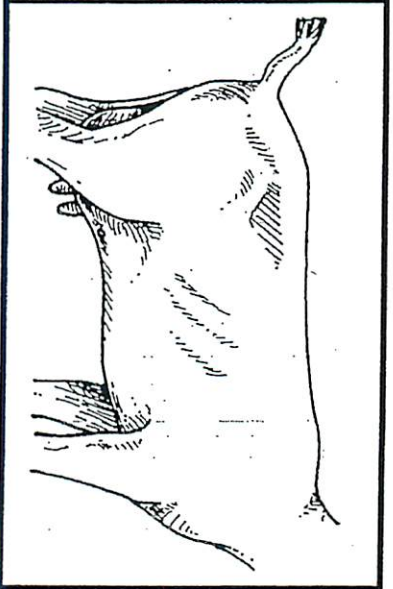




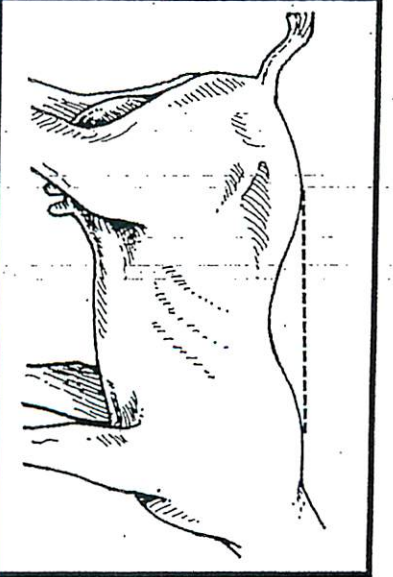
# Goat Topline Structure



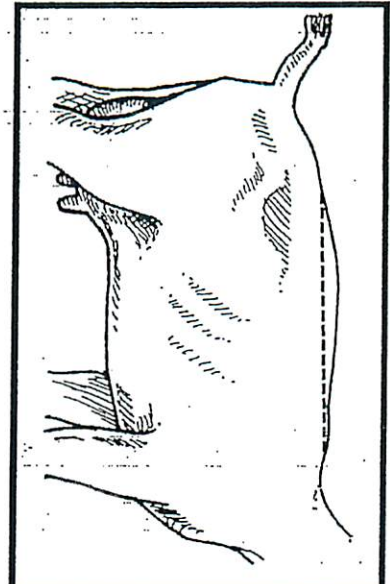
Merry Back



Level Back



Sway Back



Reached Back



Weak in the Chine

## GOAT LEARNING LABORATORY KIT

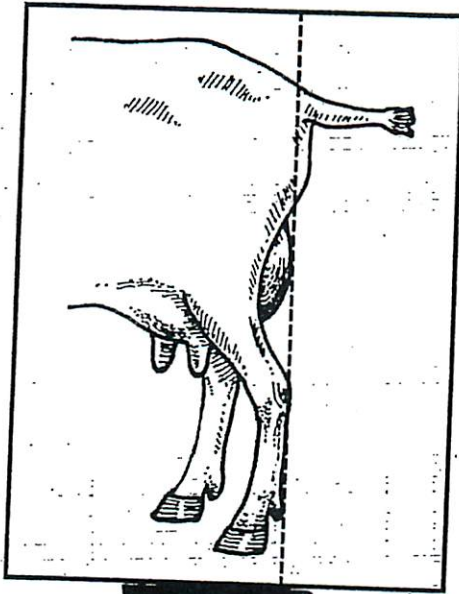
Exploratory Learning: Educational Program

This component adapted from materials published in the *Dairy Goat Journal*, Helenville, VT

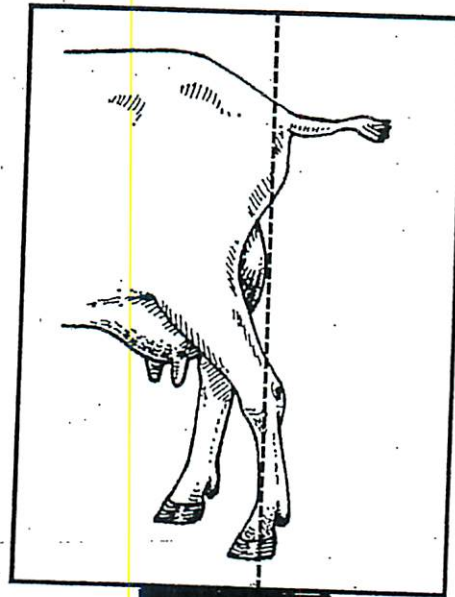
Product distribution through the Curriculum Materials Service



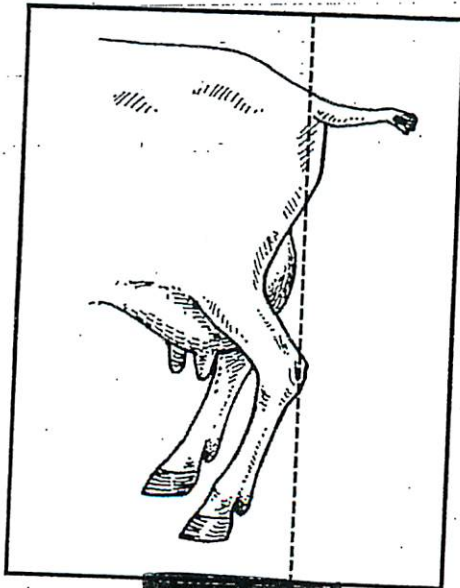
# Goat Feet and Leg Structure (Part II)



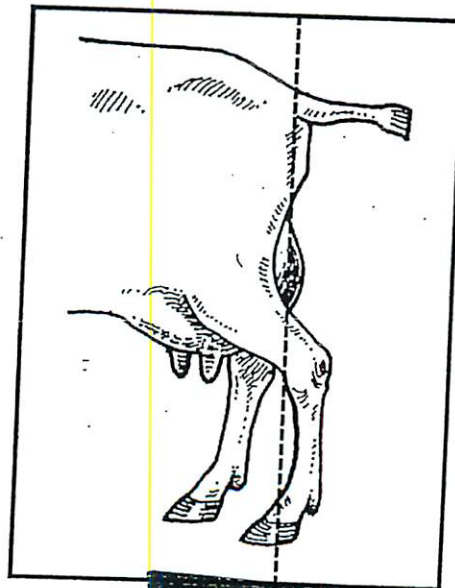
Ideal Rear Legs



Post-Legged



Sickle-Hocked



Weak Pasterns

 **GOAT**  
LEARNING LABORATORY KIT

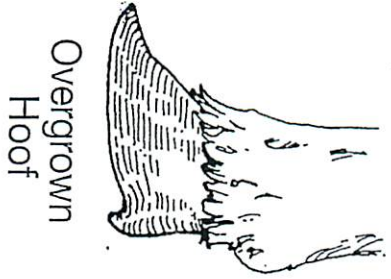
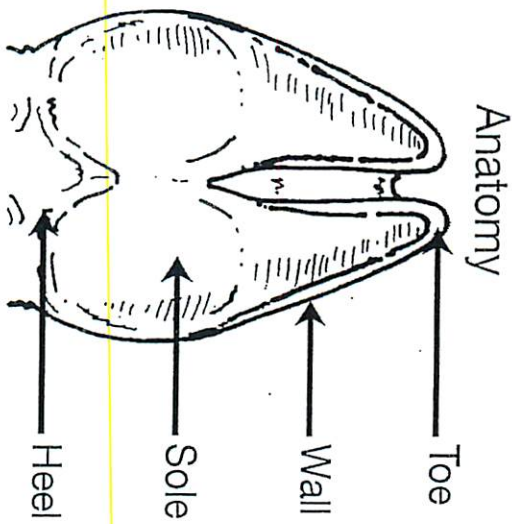
Exploratory Learning: Educational Program

This component adapted from materials published in the *Dairy Goat Journal*, Helenville, WI

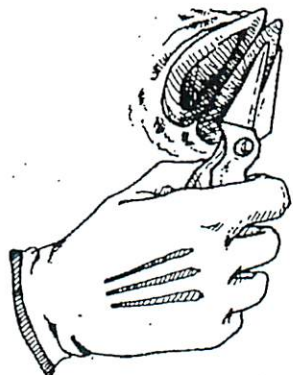
Product distribution through the Curriculum Materials Service



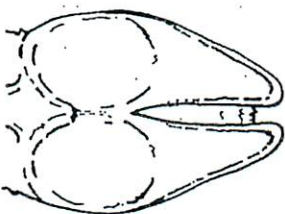
# Goat Hoof Trimming



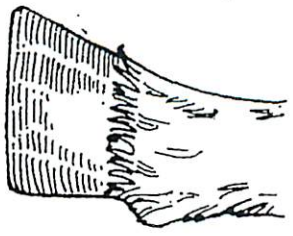
Overgrown Hoof



Cut from Heel to Toe

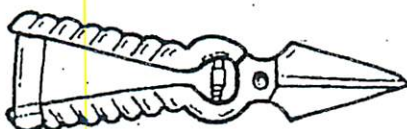


Properly Trimmed Hoof Bottom View



Properly Trimmed Hoof

## Tools



Foot Rot Shears



Pruning Shears

**GOAT**  
LEARNING LABORATORY KIT

**Exploratory Learning: Educational Program**  
This component adapted from materials of the American Dairy Goat Association

Product distribution through the Curriculum Materials Service

## 12-14 Year olds

Definition of Selection Criteria~ Match the 5 terms with the correct definition. (1 pt. each)

Structural Correctness	Evaluation of the skeletal system or bone structure of the goat.
Style & Balance	Refers to how all the parts of the goat blend together.
Volume	Refers to the length and depth of the goat OR the capacity.
Growth Potential	Looking for a combination of traits that fit your desired goal in raising a goat. Must look at the frame of the goat.
Muscle	The thickness of the goat.

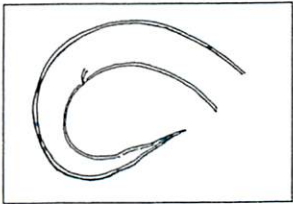
## 12-14 Year Olds

### Diseases & Ailments

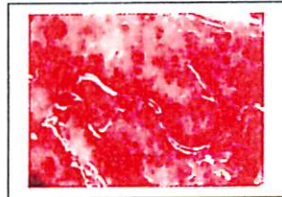
Identify the 4 internal parasites and 8 additional diseases/ailments of goats (1 pt. each)

#### INTERNAL PARASITES

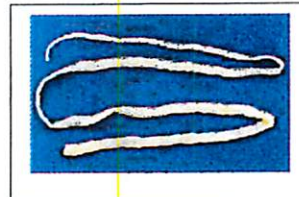
Lungworms



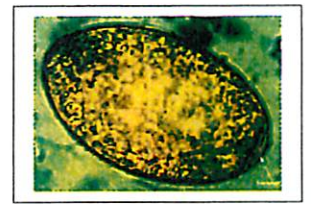
Stomach Worms



Tapeworms



Coccidia



#### DISEASES & AILMENTS

(Matching)

Pneumonia= Lower respiratory tract disease. Caused by a number of bacteria, viruses, parasites, and allergies. Symptoms include cough, runny eyes, nose, fever, loss of appetite, rapid breaths.

Coccidiosis= Disease caused by a parasite. Symptoms include bloody diarrhea, loss of appetite, anemia, weight loss, dehydration, decreased growth and death. Diagnosed by looking a feces under a microscope.

Foot Rot= Caused by an infection that destroys tissue. The germ that causes it grows in wet, dark places, such as mud, where there is no air. Can enter the tissue through bruises or small cuts and multiplies under the skin. Watery fluid oozes from the infected area.

Enterotoxemia= Caused by the organism *CLOSTRIDIUM perfringens* type C or D, a bacteria usually present in intestine and environment in small amounts. Can cause sudden death in the animal due to absorption of the toxin.

Urinary Calculi= Better known as Waterbelly, this condition is caused when a bladder/kidney stone blocks the urinary tract and the animal has trouble urinating or cannot urinate at all.

Soremouth= Contagious Ecthyma is a viral disease caused by a parapox virus and it causes sores and scabs on the lips and skin around the mouth.

Tetanus (Lockjaw)= This ailment is caused by the bacterium called *Clostridium tetani* which is commonly found in the environment. Skin wounds and fresh navels are a few pathways to the infection.

Caseous Lymphadenitis (Abscesses, CLA, CL)= A bacterium called *Corynebacterium ovis* or *C. pseudotuberculosis* causes this disease. Causes abscesses to form in the lymph nodes, usually near the head and neck. The abscesses can also be interal.

Pinkeye= An infectious disease usually carried from goat to goat, especially during hot, windy, and dusty weather. Goats with pinkeye would not be allowed to show at the fair.

Ringworm= This disease is caused by a fungus and results in scaly or hairless patches on the head, ears, neck and sometimes the udder. Treatable by scrubbing the area with soapy water and then coating it with iodine or a fungicide. It is contagious.

Caprine Arthritis Encephalitis=Also known as CAE, this is caused by a retro virus and can lead to chronic arthritis of joints and/or inflammation of the brain. Usually transmitted to kids through the colostrum and/or milk of infected does.

Scrapie= Neurodegenerative disease that affects sheep and goats. It is classified as a transmissible spongiform encephalopathy. It is a very serious disease in the United States.

# Wholesale Cuts of Chevon



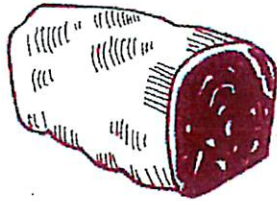
Arm Chop



Fore Shank



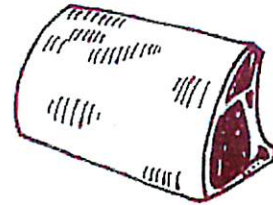
Breast



Rolled Shoulder



Blade Chop



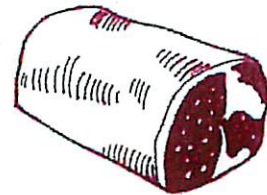
Rib Roast



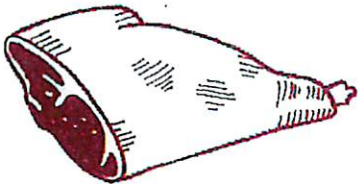
Chop



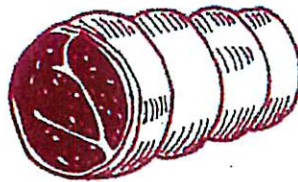
Loin Chop



Loin Roast



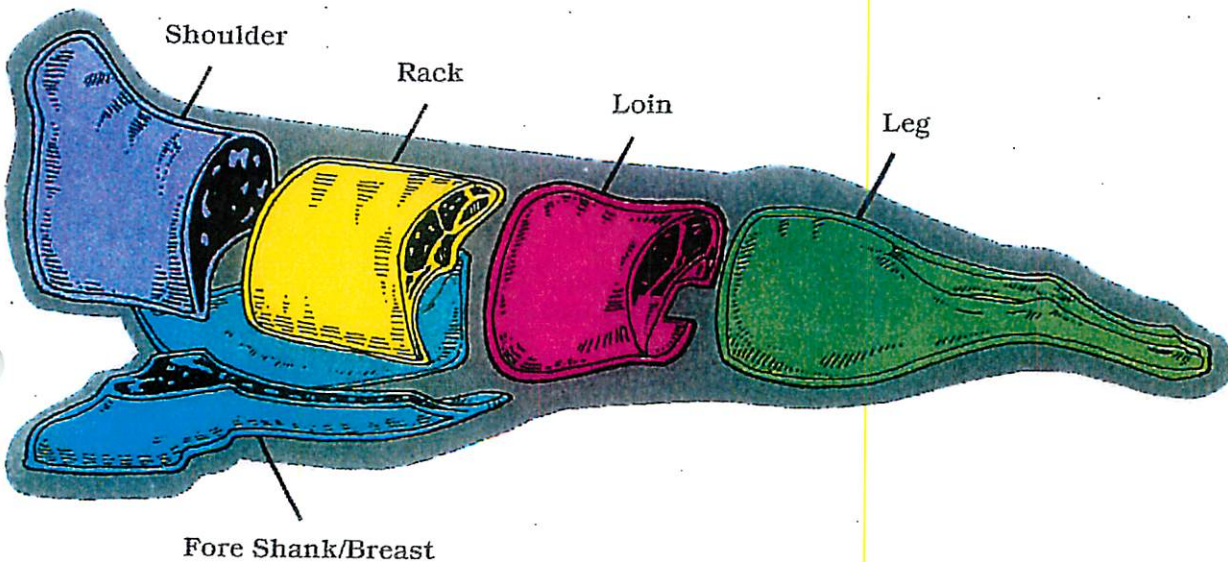
Leg, Sirloin Off



Rolled Leg



Stewed Cubed





## 15-18 Year Olds

Definitions in the Meat Goat Industry~ Match the definition with the correct term. (2 pts. each)

Chevron

Halal

Kosher

Cabrillo

Term used to describe meat from goats.  
(CHEVRON)

That which is permitted or lawful in the Islamic religion. (HALAL)

The Hispanic and Latino word that describes meat from goats, usually referring to a goat carcass that weights 15-30 pounds. (CABRILLO)

Food that is selected and prepared according to a certain criteria in the Jewish faith. (KOSHER)

## 5-18 Year Olds

1ac (Major) Minerals for Goats~ Match the mineral to the "FUNCTION" of the mineral; then place the "DEFICIENCY SIGNS" in the correct space. (1 pt. each)

MINERAL	FUNCTION	DEFICIENCY SIGNS
Phosphorus (P)	Strong teeth and bones, energy reactions in cells, and milk production.	Lack of appetite, unthrifty appearance, rickets in growing animals on pasture
Calcium (Ca)	Proper skeletal structure, muscle contraction, and milk production.	Rickets in growing animals; milk fever in lactating animals
Sodium Chloride (NaCl)	Necessary for many bodily functions; helps to transport material across cell walls.	Eating anything containing salt, signs of pica, lack of appetite, unthrifty appearance.
Magnesium (Mg)	Co-factor for major enzymatic reaction; normal nerve and muscle function; and bone formation.	Grass tetany or Grass staggers; more commonly occurs with animals on pasture.
Sulfur (S)	Component of some essential amino acids that make up proteins; required by rumen microbes for fiber digestion.	Reduced animal performance and fiber digestion; excessive sulfur can interfere with copper and selenium absorption.
Potassium (K)	Muscular activity; osmotic pressure of body fluid.	Decreased feed and water intake; weight loss; reduced milk yield; pica; dull hair coat; forages are high in K, usually does not need to be supplemented except in hot weather.